

# DT7

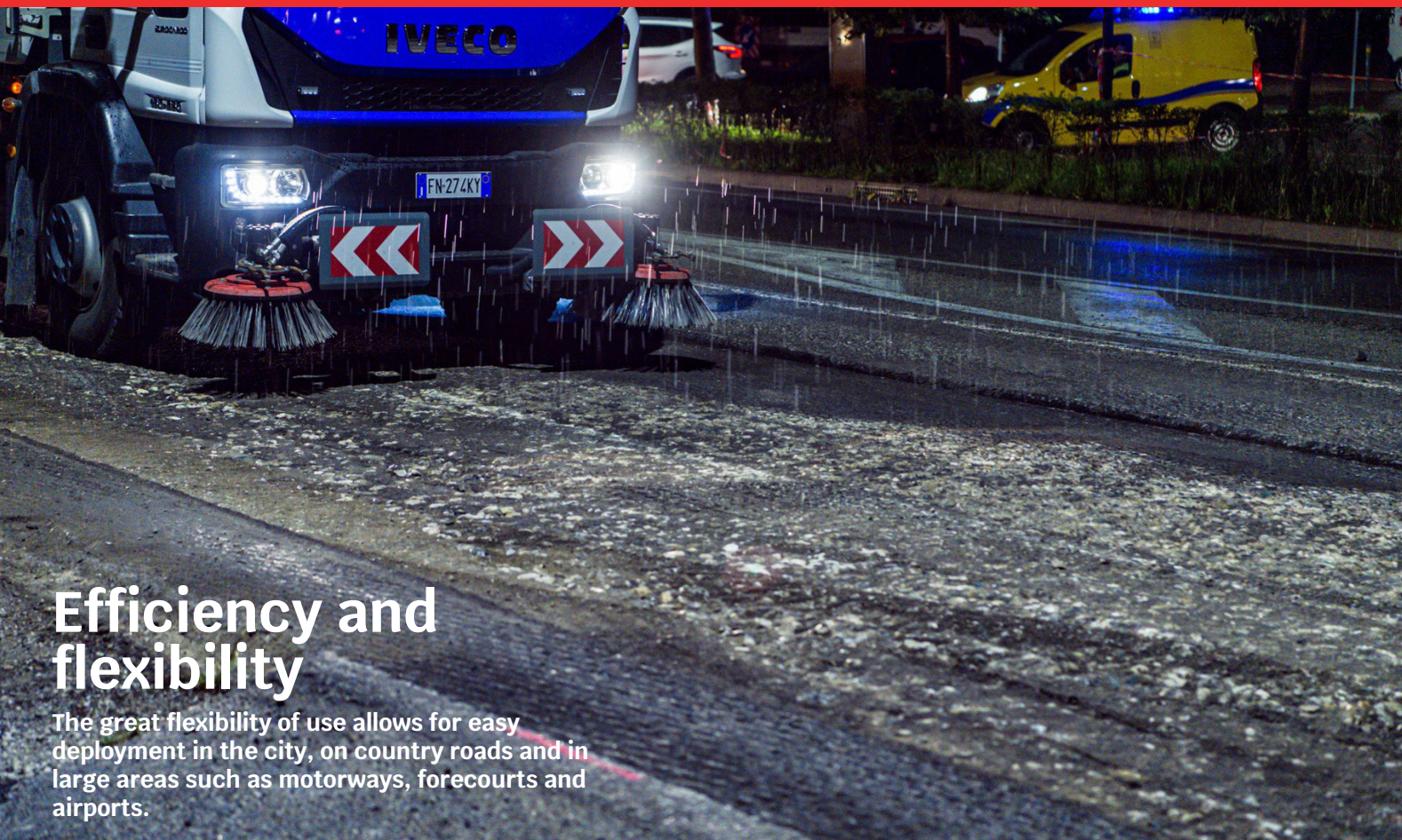
Street Sweeper



**DULEVO**  
FAYAT GROUP

TIMELESS QUALITY THROUGH PASSION





## Efficiency and flexibility

The great flexibility of use allows for easy deployment in the city, on country roads and in large areas such as motorways, forecourts and airports.



## Strong

Strong construction achieved by adopting quality materials and components.

## Truck chassis

Dulevo equipment can of course be applied to the chassis of trucks of various makes including: Iveco, Scania and Mercedes.



## High efficiency of suction

High suction capacity is ensured by the independent auxiliary motor.





## Sweeping system

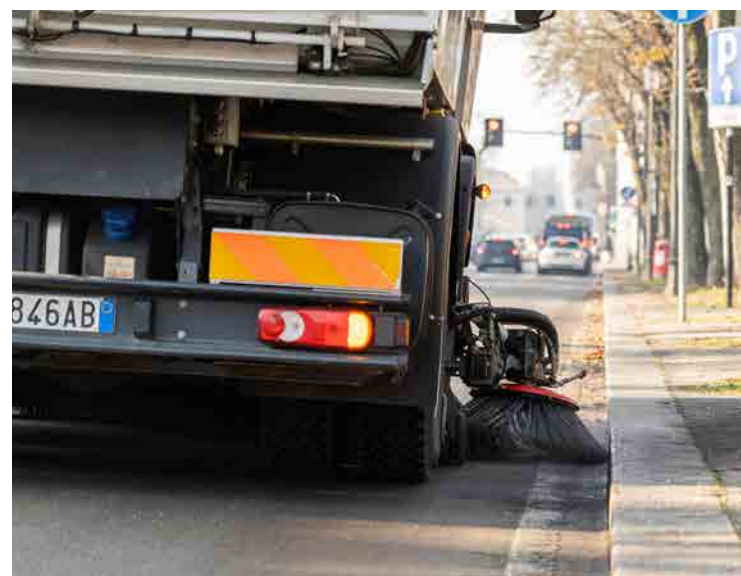
Collection is by means of the side brush and central brush, which carry the debris and dust to the suction inlet.

## Suction

Suction can take place alternately on either the right or left side.

## Simple maintenance

The absence of electronics also allows for easy and rapid detection of any malfunctions, and a much quicker and cheaper repair in the event of a fault even without the need for specialist technicians.







## Designed for People

A comfortable and pleasant sweeper to use even after many hours of work.



## Pressurisation system

The pressurisation system by means of filtered air supply maintains a clean and comfortable working environment inside the cabin.

## Wireless

Wireless radio control for managing of all functions of the waste container.



## Intuitive controls

Control panel is located on the side of the driver's seat in a convenient position within easy reach of the operator.





## DT7 versions

They guarantee the customer the highest levels of performance in every context.



### T version

The suction unit is fastened to a towed carriage. A ball joint allows the carriage to adjust to different road conditions. The carriage wheels are of the type with die-cast aluminium rim and elastic rubber ring.

For this carriage the side brush is only available in the towed version.

### S version

The suction unit is fastened to a thrust carriage, designed to adapt to different conditions of use, including sweeping in areas where a large amount of material is present.

It is possible to manually adjust the external exit of the carriage in working position. The 250 mm diameter carriage wheels are made of super-elastic rubber, mounted on sturdy swivel supports. The carriage is fitted with a sturdy steel side bumper.





# Equipment

The wide choice of optional extras and accessories also allows customisation according to specific sweeping needs.



## Front brush

- Telescopically extendable front brush, right-hand side;
- Fixed front brush, right or left side;
- Fixed front brush, right and left side.

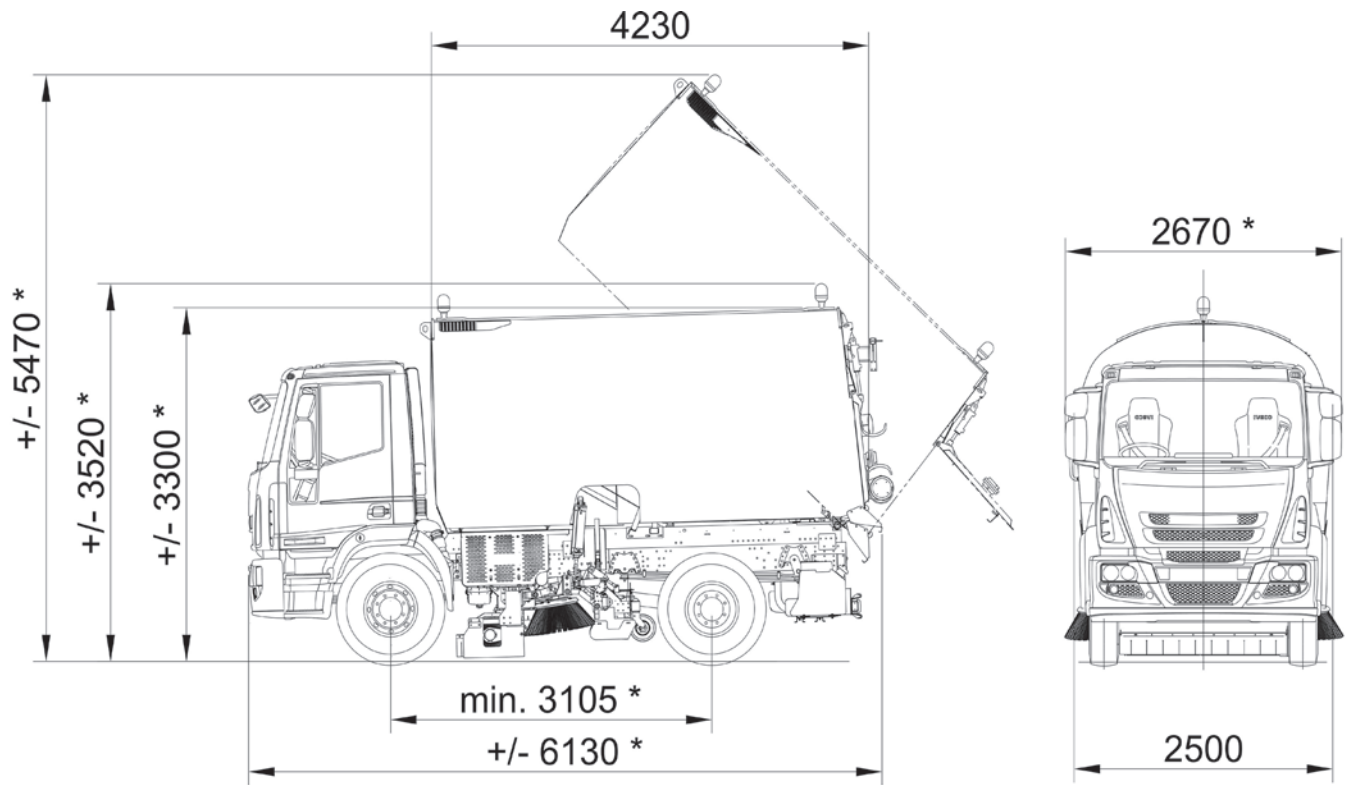
## Cleaning with high pressure lance

the DT7 can be fitted with a cleaning lance to reach into every corner, with a hose reel and high pressure. It is also possible to mount a pivoting working arm to facilitate the use of the lance and to overcome obstacles such as parked cars.



## Versatility

Our experience has led us to develop configurations adapted to different cleaning areas, the types of dirt to be cleaned and the general needs of customers.

**Technical Data****DT7**

Variable weeping width:

- Minimum	mm	1.800
- Maximum	mm	3.200
- With 3rd front brush	mm	3.700
Gross hopper volume	m <sup>3</sup>	6,8
Hydraulic drumming up	mm	1.150
Cabin seats	n°	2
Cleaning performance	m <sup>2</sup> /h	55.500
Maximum speed	Km/h	90
Steering radius - Kerb to Kerb	mm	5.750
Engine brand		Iveco
Engine approval		Euro 6 E
Power supply		Diesel
Auxiliary Engine		Deutz
Auxiliary engine approval		STAGE V - Tier 4 EPA
Auxiliary motor power supply		Diesel

## Dulevo Fayat Group

Dulevo was founded in 1976 and is now part of the Fayat Group, France's largest privately-owned construction, industrial and road infrastructure group. The knowledge of cleaning technology acquired by Dulevo, based in Parma in the heart of Italy's Motor Valley, forms the basis of our state-of-the-art and reliable machines. Our motto, 'Timeless Quality through Passion', reflects our commitment to providing innovative, high quality cleaning solutions to municipalities and industry, with a focus on environmental care.



Specifications are not binding for our company and subject to change at any time without notice



Dulevo International S.p.A.  
Via Giovannino Guareschi, 1  
43012 Fontanellato (PR) Italia  
Tel: +39-0521-827711  
[www.dulevo.com](http://www.dulevo.com)



## QUALITY, INNOVATION AND RESPECT FOR THE ENVIRONMENT Dulevo Certifications:

**ISO 14001**  
ENVIRONMENTAL  
SYSTEM  
CERTIFICATION



**ISO 9001**  
QUALITY  
SYSTEM  
CERTIFICATION



**ISO 45001**  
SAFETY  
SYSTEM  
CERTIFICATION



**EUnited PM TEST**  
COLLECTION AND  
FILTRATION  
DUST

