



DT8H
SUCTION STREET SWEEPER

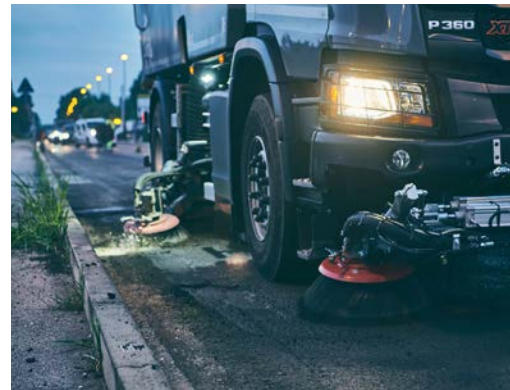


The Dulevo DT8H suction road sweeper is a heavy-duty machine designed to work in urban environments with high traffic conditions, port areas, airports and road construction sites. Thanks to its powerful suction action, the machine is capable of collecting any type of material, from light urban waste, gravel to heavier waste.



The high suction capacity is guaranteed by the independent auxiliary engine with low polluting emissions: great power and maximum respect for the environment. A mechanical transmission connects the motor and the fan, and allows for always constant suction performance, even in intense use. A proven system that guarantees maximum reliability and extreme simplicity of maintenance in favour of high operating performance and minimum operating costs.

The collection takes place by suction with mouth, rotating brush and central roller. Where necessary, it is possible to take advantage of the simultaneous suction on both sides of the machine. The front brushes (optional in fixed or extendable version) can be used in the most demanding work situations.





An effective humidification system with an accurate channeling of the air flow guarantees the containment of the emission of dust into the atmosphere. The filtering grid can be folded pneumatically and (as an option) can be equipped with an automatic shaking system to facilitate and speed up the cleaning and maintenance operations of the collection compartment. The large volume of loading and the large capacity of the water tank ensure high autonomy in the sweeping cycles. As an option, the machine can be equipped with a high-pressure water system for washing the vehicle and/or the road surface.



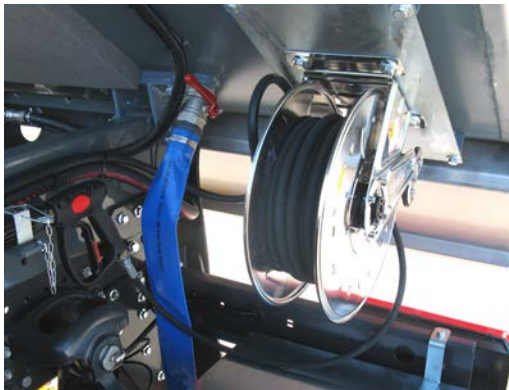


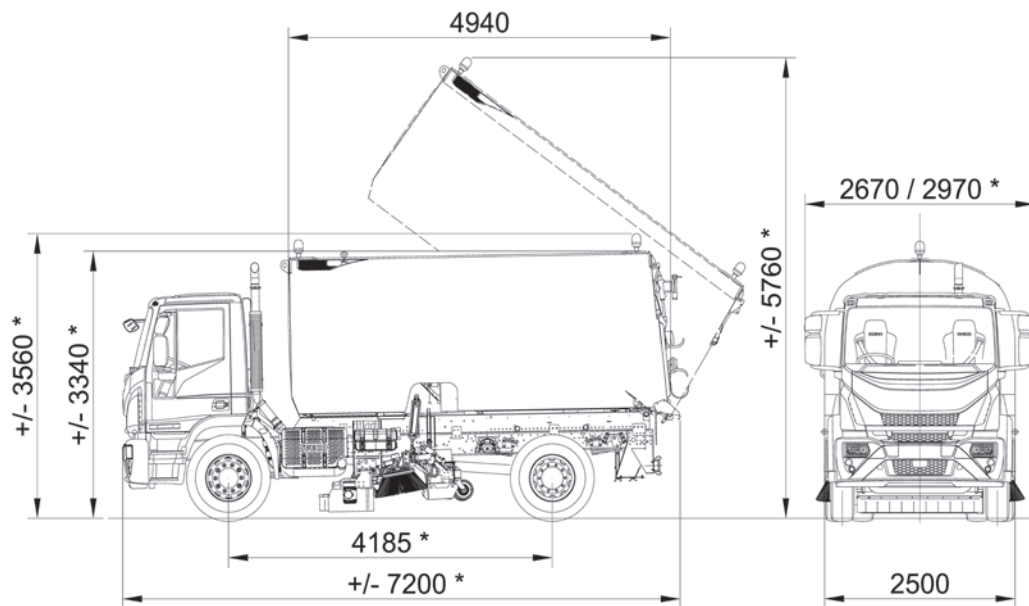
High comfort in the cabin and ease of driving. The control panel is placed on the side of the driver's seat in a comfortable position and easily accessible by the operator. Sturdy construction (made entirely of sheet metal) and large in size, it allows the operator to constantly monitor each device of the sweeper; the setting of the operating parameters is thus simple and intuitive. The optional equipment also includes a separate control unit in the driver's door area to control the main functions of the sweeping unit, and a wireless remote control for managing all the functions of the waste hopper.





The DT8H equipment can be applied to the chassis of trucks from major manufacturers including: Iveco, Scania and Mercedes. A wide range of accessories allows to widen the field of use and to offer the most suitable solution for the different and specific needs in sweeping work. The offer includes: additional front brushes, rear suction hose, high-pressure washing system, additional work lights, lights and remote signalling panels, camera system for viewing and controlling the area of work, toolboxes, automatic greasing system and additional fuel tanks.





* depends on the truck chosen

Technical data

Technical data		DT8H
Sweeping width	mm	2250 - 3300
Maximum Cleaning performance	m ² /h	49.500
Waste hopper volume	m ³	8.7
Seats in the cabin	no.	2
Water tank capacity	L	2400
Brand auxiliary engine		Deutz
Auxiliary engine emissions		Stage V
Fuel		Diesel



CODE F034K00000 - Ed. 00-2021 © (copyright) 2014 Dulevo International S.p.a.

Specifications are not binding for our company and subject to change at any time without notice

Dulevo International S.p.A.
Via Giovannino Guareschi, 1
43012 Fontanellato (PR) Italy
Tel.: +39-0521-827711
Fax: +39-0521-827795
www.dulevo.com